



Tech Tip

CAB DOLLY

Author: Randy Baumann

All information, illustrations and specifications are based on the best information available at the time of publication. The author cannot guarantee the accuracy of the information contained in this publication. Corrections are welcomed, and can be submitted to randy74@charter.net.

NOTE: This cab dolly was designed to be used with a late 1930's—mid 1940's Chevrolet® and GMC® trucks, but with modification, it may be adapted for use in other applications.

This cab dolly can be useful to support and move the cab while it is removed from the frame. It also provides a stable work platform for repairing the cab.



A410003A

Figure 2: Side/Rear View

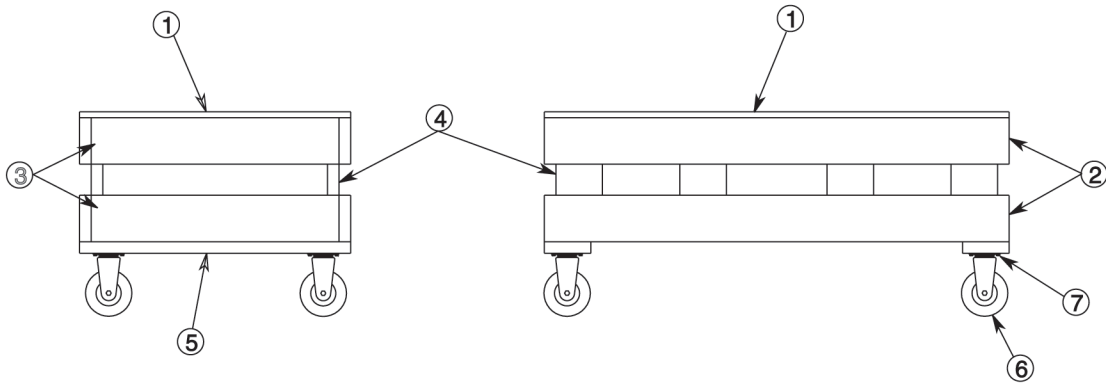
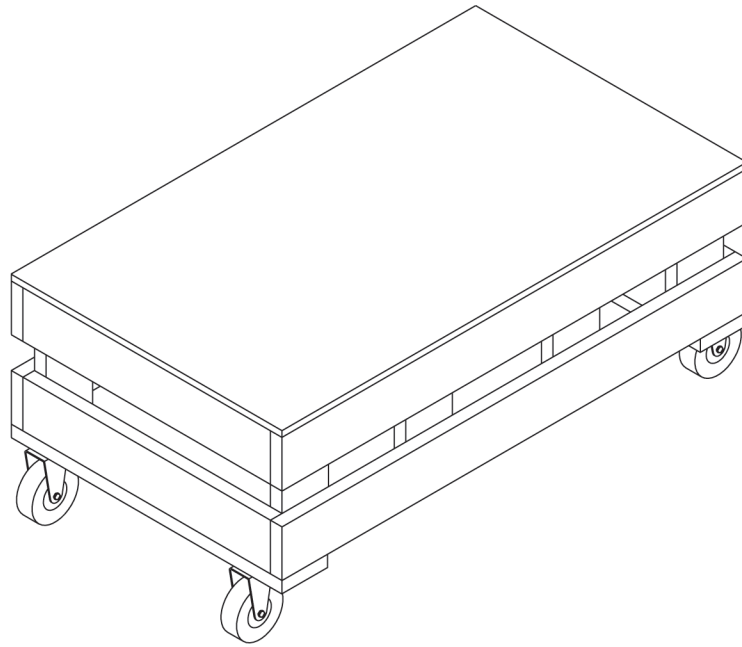


A410001A

Figure 1: Front View

Chevrolet is a registered trademark of the Chevrolet Motor Division of the General Motors Corporation.

GMC is a registered trademark of the GMC Truck Division of the General Motors Corporation.

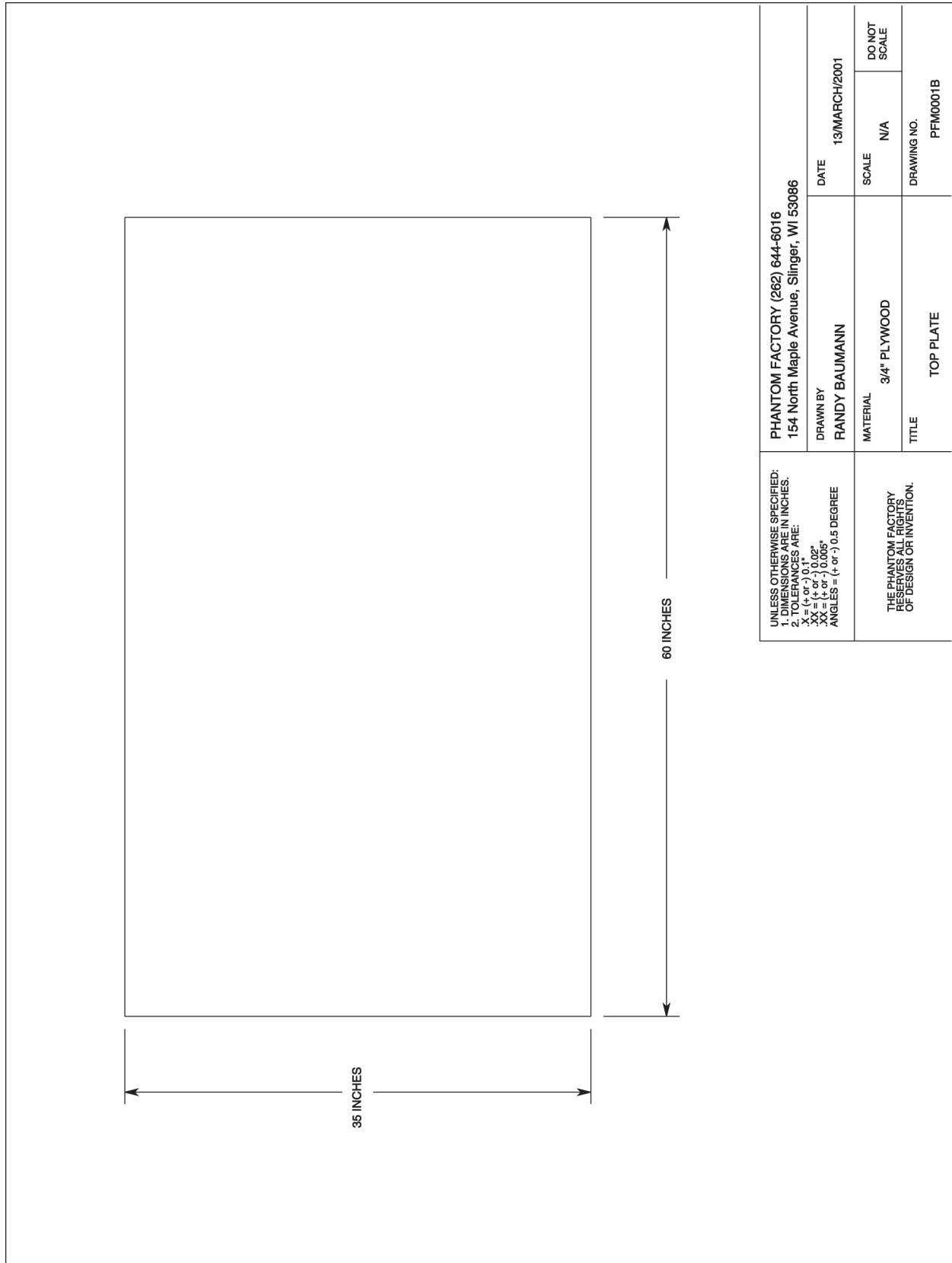


ASSEMBLE ALL PARTS USING NAILS, OR IF DESIRED BOLTS AND NUTS.
PAINT OR FINISH AS DESIRED

| ITEM | PART DESCRIPTION | PART No. | QTY. |
|------|------------------------|----------|------|
| 1 | TOP PLATE | PFM0001B | 1 |
| 2 | SIDE BOARD | PFM0001C | 4 |
| 3 | END BOARD | PFM0001D | 4 |
| 4 | SUPPORT BOARD | PFM0001E | 8 |
| 5 | BOTTOM BOARD | PFM0001F | 2 |
| 6 | 6 INCH SWIVEL CASTERS | -- | 4 |
| 7 | MISCELLANEOUS HARDWARE | -- | A/R |

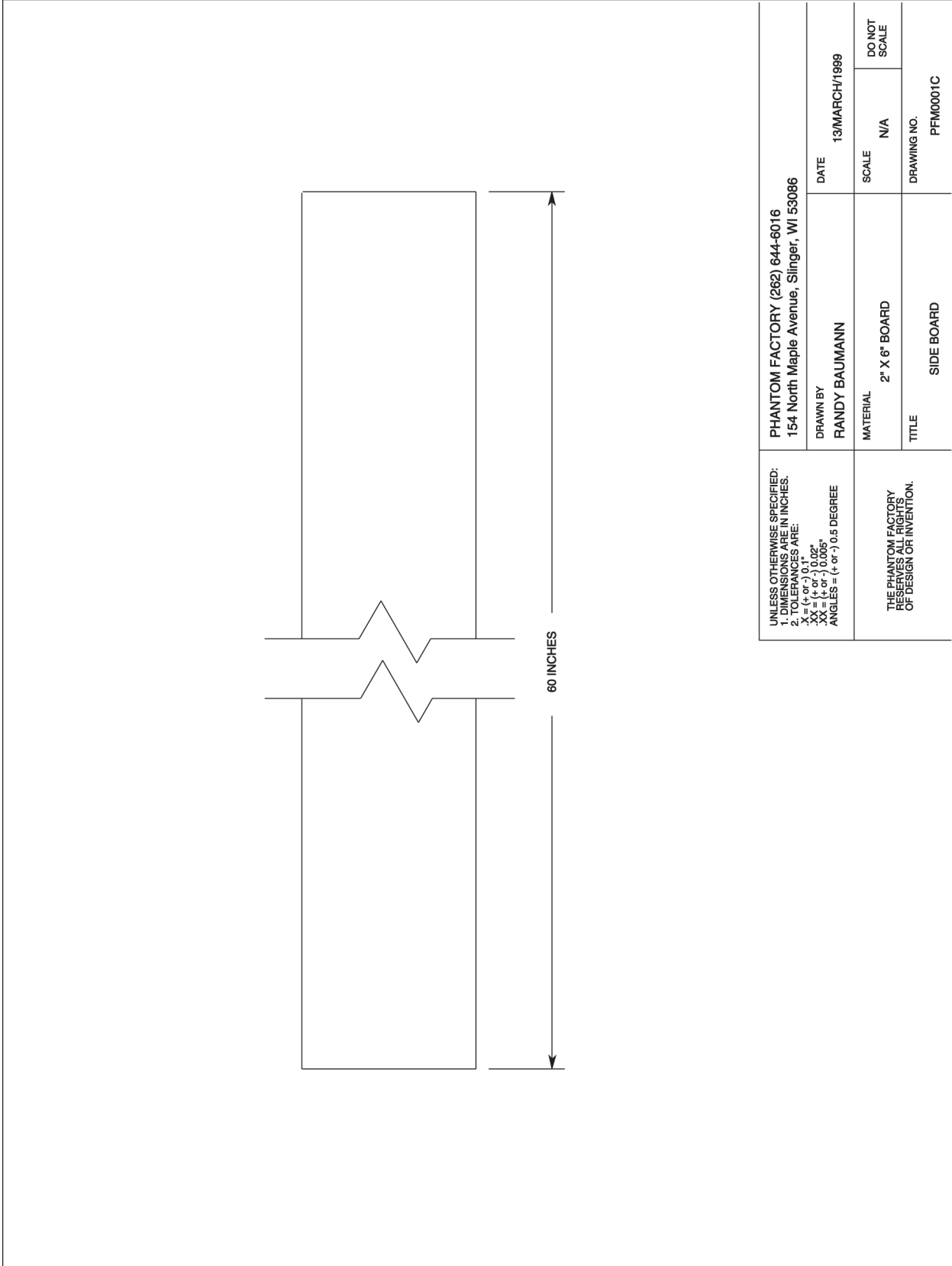
Figure 3: Assembly Drawing

CABDOLLY



PFM0001B

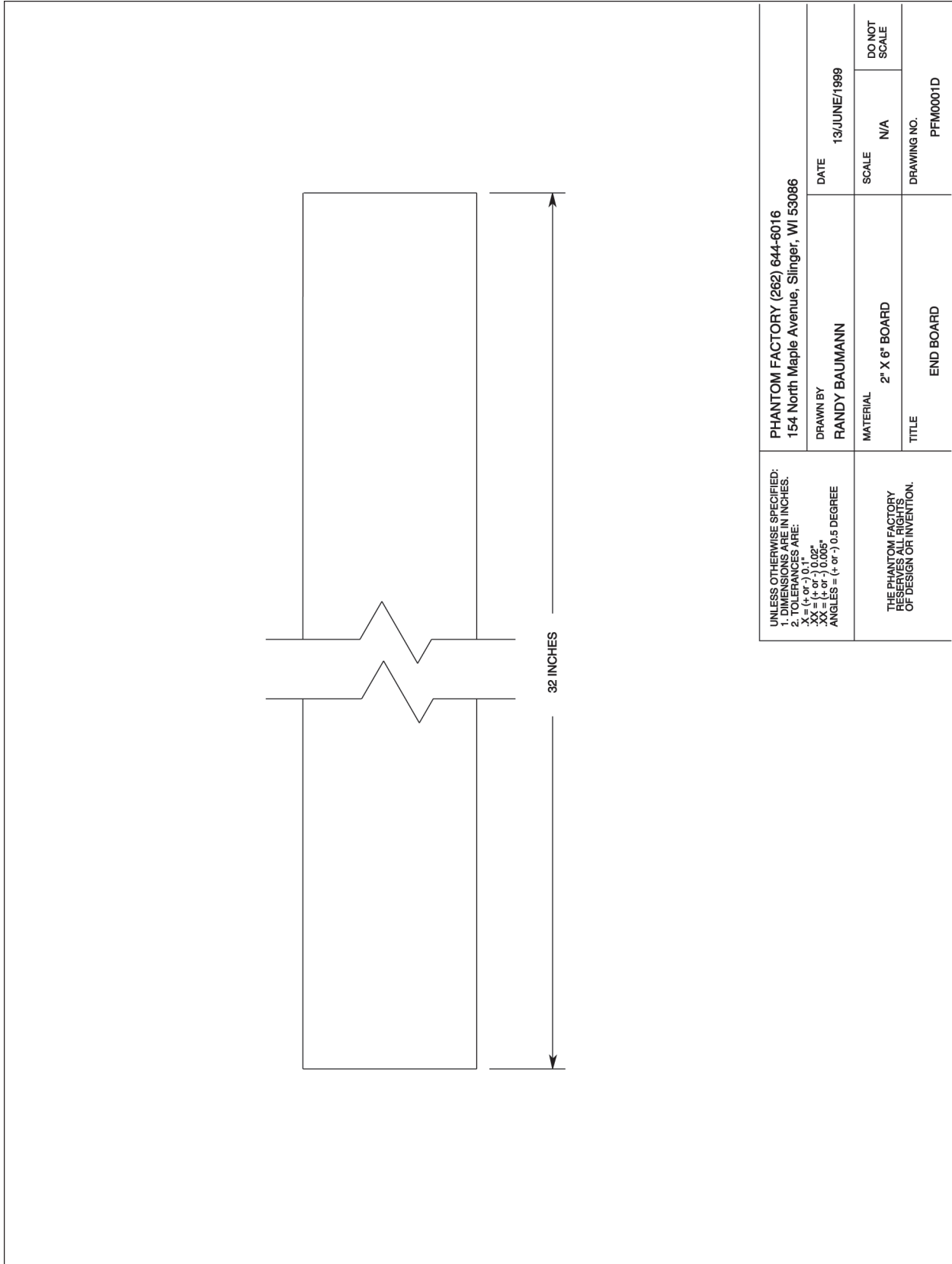
Figure 4: Top Plate



| | | | | | |
|---|---|----------|---------------|---------------|-------------------------|
| UNLESS OTHERWISE SPECIFIED: 1. DIMENSIONS ARE IN INCHES. 2. TOLERANCES ARE: .X = (+ or -) 0.1 .XX = (+ or -) 0.02" .XX = (+ or -) 0.005" ANGLES = (+ or -) 0.5 DEGREE | PHANTOM FACTORY (262) 644-6016 154 North Maple Avenue, Slinger, WI 53086 | | DATE | 13/MARCH/1999 | |
| | DRAWN BY RANDY BAUMANN | | SCALE | N/A | DO NOT SCALE |
| THE PHANTOM FACTORY RESERVES ALL RIGHTS OF DESIGN OR INVENTION. | | MATERIAL | 2" X 6" BOARD | | DRAWING NO. PFM0001C |
| | | TITLE | SIDE BOARD | | |

PFM0001C

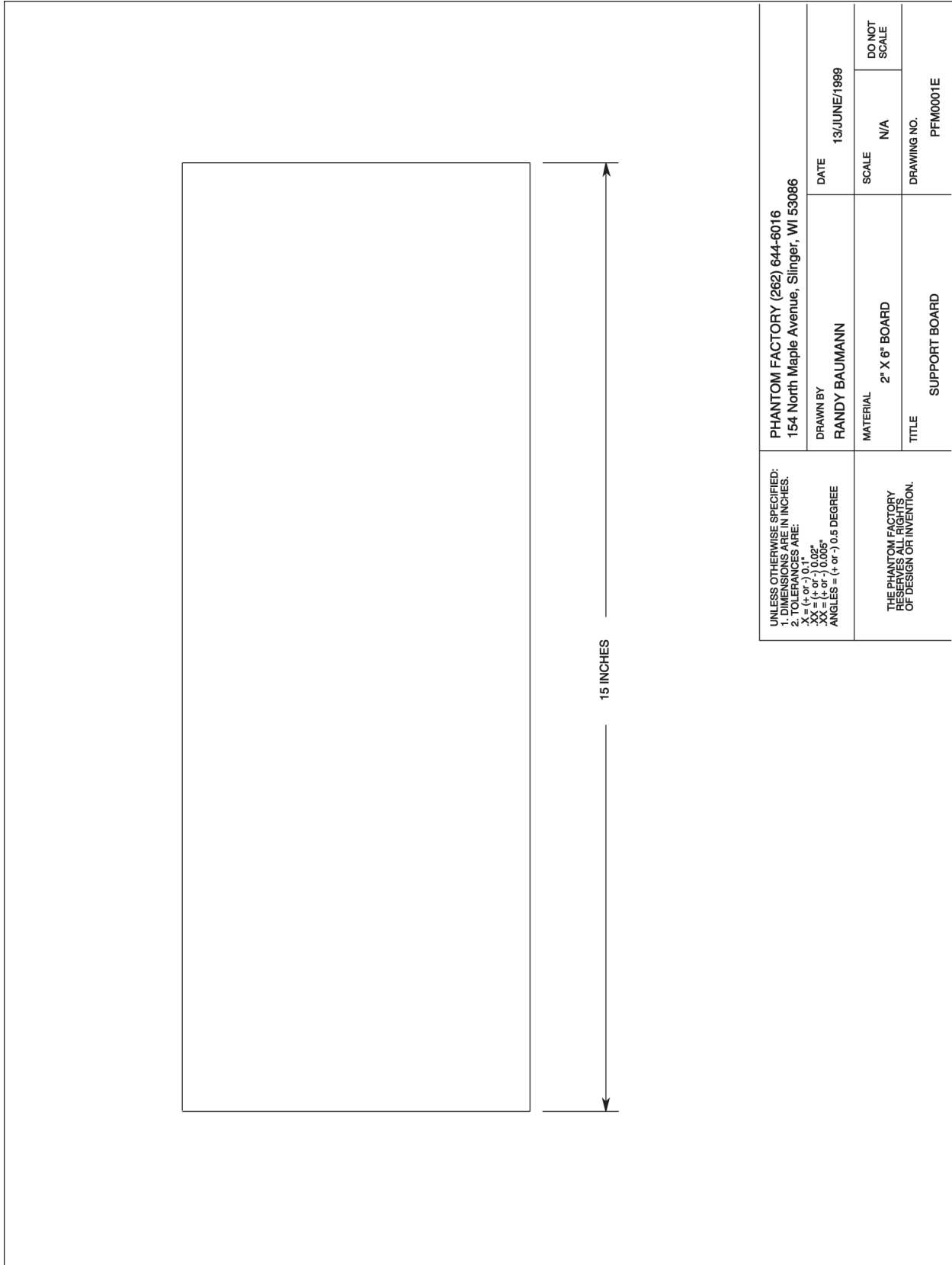
Figure 5: Side Board



| | | | | | |
|--|---|-----------|---------------|--------------|--------------|
| UNLESS OTHERWISE SPECIFIED: 1. DIMENSIONS ARE IN INCHES. 2. TOLERANCES ARE: .X = (+ or -) 0.1 .XX = (+ or -) 0.02" .XXX = (+ or -) 0.005" ANGLES = (+ or -) 0.5 DEGREE | PHANTOM FACTORY (262) 644-6016 154 North Maple Avenue, Slinger, WI 53086 | | DATE | 13/JUNE/1999 | DO NOT SCALE |
| | DRAWN BY RANDY BAUMANN | MATERIAL | 2" X 6" BOARD | SCALE | N/A |
| THE PHANTOM FACTORY RESERVES ALL RIGHTS OF DESIGN OR INVENTION. | TITLE | END BOARD | | | |

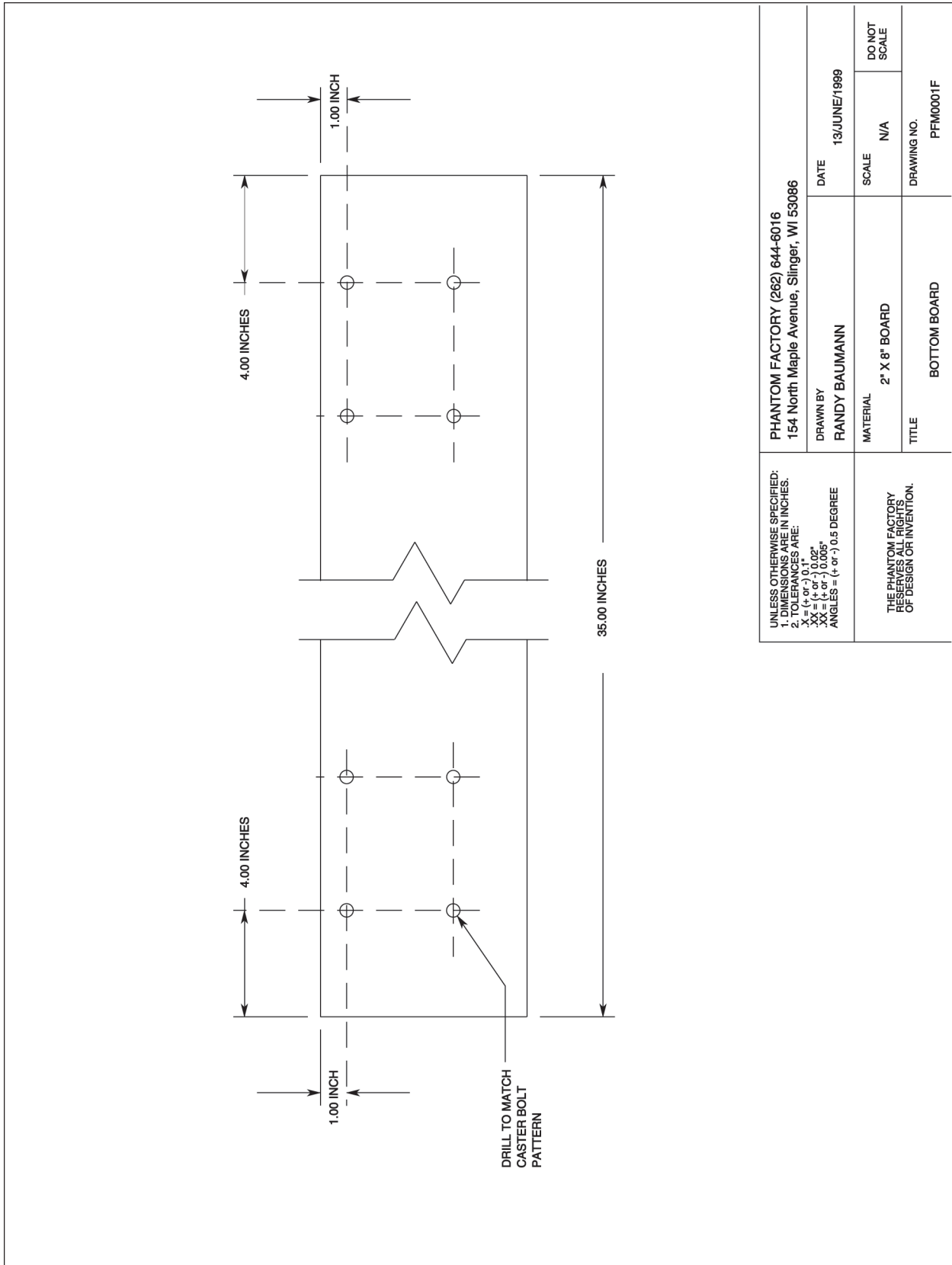
PFM0001D

Figure 6: End Board



PFM0001E

Figure 7: Support Board



PFM0001F

Figure 8: Bottom Board